

Wall story

I want to install a wet room in my Edwardian house. What's the key thing to bear in mind?

When refurbishing any period property, remember that it's highly unlikely that the walls will be perfectly straight. In most rooms this isn't a problem, however when it comes to the bathroom and installing a new shower you want to ensure that the area can be made watertight. At Showerlux we recognised that this was a common issue so most of our enclosures and wet room panels come with compensation channels for out of true walls. Another option when working on an older property is to commission a bespoke enclosure that can be designed to fit around any details already in the room, something our made-to-measure team can help with.

Bob Bowler, Showerlux
02476 639 400, showerlux.co.uk

Pride of place

I'd really like to make a statement in my bathroom. What do you suggest?

There's nothing quite like an antique bath to make your scheme original and eye-catching. You might want to choose a piece which is in keeping with the age and character of your home or go for a more eclectic choice. A double-ended bath is always a popular option, especially if it is large enough for two to share. Decide whether you want to have a French-style bateau bath which is flush to the floor or a roll-top with ball and claw feet. Visit a specialist with extensive knowledge of restoring these tubs to discuss the options. Make sure that you ask your supplier for precise instructions on caring for your bath so you can maintain it properly at home.

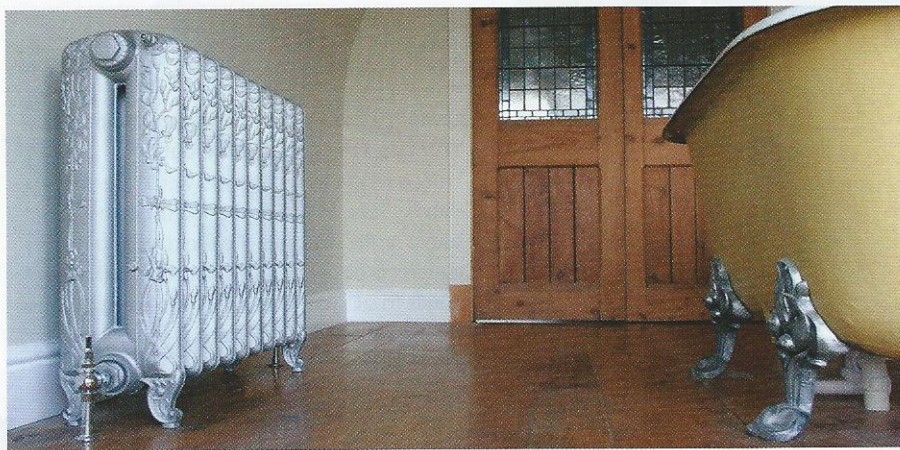
Charles Harpo, The Bath Works
01582 602 713, thebathworks.com

Wash & go

I'm keen to have a shower enclosure in my second bathroom but we're pushed for space. Can you advise me?

Fear not. A corner entry shower will help you when space is at a premium and you are working around other bathroom fixtures. You need to walk in and out of all the enclosures available in the showroom and make sure you will have enough room to wash your hair comfortably under the shower or rinse off a body treatment. Remember that it is always best to err on the generous side and give yourself a little more room rather than a little less as banging your elbows is most unpleasant. Choose a hand-held shower as well as an overhead rose so that life will be easier when you are cleaning the unit. Also work out what sort of shower door is most suitable for you.

Phil Etherden, The Albion Bath Company
01206 794 462, albionbathco.com



Turn up the heat

I'd love a radiator for my en-suite but I'm worried there won't be enough room.

Even the most petite en-suite can accommodate a radiator if you're clever with your design. If you're unsure of the possibilities then contacting an expert is a shrewd move. Make sure that you know all the dimensions of your room and the fittings before going to the showroom so everyone knows how much space you have

available. At The Old Radiator Company we can suggest different shapes and styles which will provide the right amount of heat as well as working in harmony with the proportions of your room. We can also make sure that the radiator you choose will work with your heating system.

Diana Rabjohns,
The Old Radiator Company
01233 850 082, theoldradiatorcompany.co.uk

All change

I've just moved house and I'd like to replace the taps in my bathroom. Please help!

Work out what exactly you don't like about the current brassware. If you are happy with the suite as a whole, then look at some products which will work with the shapes of your fixtures so the room scheme feels more congruent. As everyone in the family will be using the taps several times a day, you need to make sure they are comfortable, easy to control and close. For example, some people find lever taps very practical as you can turn them off using your arms if you don't have a spare hand when you are washing your hair. Whatever option you choose, buy the best you can afford and ask your retailer about how you can maintain them properly.

Simon Stowell,
Bathroom Discount Centre
020 7381 4222,
bathdisc.co.uk

